

# FOOD FOR THOUGHT (A Transformational Sculpture Site)

## Proposal

'Food for thought' references local aboriginal dot work art, turning it into a contemporary art installation, paying respects to the first owners of the land, The Eora People. All aboriginal dot paintings were based around stories, with symbols depicting their cultural beliefs.

The Eora people were the traditional owners of the Macquarie park site. Their tribe consisted of strong ties of kinship and survived as skilled hunter-fisher-gatherers in family groups or clans scattered along the coastal area of what is now known as the Sydney basin.

The installation emulates a painting based on the food source of the local people, symbolising honey ants, waterholes (fishing holes) and boomerangs. The installation also shows the story told in the 2 dimensional dot painting into a playful 3 dimensional installation. This allows the site to be read in 3 dimensions by immediate traffic and surrounds and in 2 dimensions from above.

The honey ant symbol- giant translucent honey ant sculptures come alive, walking back to the surrounding forest reserve after drinking from the water holes, while a couple seem to be lost walking into the oncoming traffic.

The waterhole is accentuated in 3D by the prominent water fountain surrounded by the coloured capped poles representing movement patterns within water currents.

The campsite is the largest piece, representing the safety of a large campsite, through the use of large landscaping items and coloured capped poles. The intensity of the poles is the gathering of people in the more important places.

### 1) Responding to the site (Principles)

In response to the thematic criteria we say: The design uses existing site characteristic (water, vegetation, etc) driven by renewable energy captions.

The design is consistent with Transurban's three sustainability pillars:

- a. Be Good Neighbours = The installation embraces its surrounds.
- b. Use less = The installation is spread evenly over the whole site, incorporating indigenous vegetation as an integral part of the design. There is no harsh impact on the environment
- c. Think Long Term = As the site integrates with its surrounds into the future, the plant life will establish a safe habitat for threatened fauna species.

With over 70% of the site planted and the inclusion of a water hole, the design attracts wildlife, providing them with food, water and protection in the foliage. The water feature on the site provides the option to connect into the retention wetland basin.

Due to the spread out nature of the installation, it can be seen from both directions on the motor way and surrounding buildings. Many glances rather than one.

The motor way at the site totals 7 lanes for both directions. The installation breaks free of the mundane road, with the introduction of bold colours and symbols.

### 2) Degree of innovation

The design uses the innovative idea of integrating traditional aboriginal cultural heritage and abstracts it with modern art. The design explores the idea of using the technique of blending artificial and natural elements together, steel posts, sculptures and planting, to create the installation. Each item plays an integral part in the artwork.

### 3) Artistic expression and engagement

The idea is about paying homage to the traditional owners of the land in an abstract concept. Things of historical importance shown in their artwork are a way of telling a story and documenting it. The chosen art work has 4 main symbols. The honey ant, the waterhole, the campsite and the boomerang. All reflect the fishing-gatherer traits of the Eora tribes.

The honey ant is a form of bush tucker that the females of the tribe would go out to get. The men would fish at the beach or local waterhole, congregating back at the camp. These are important aspects of the Eora way of life.

The installation focuses on three main areas. The water hole (fountain), the campsite (large central dot art) and the giant honey ants walking around the site. These are all symbols found in aboriginal art.

### 4) Ease of implementation

The design is very adaptable, cost effective and can be easily constructed. The pillars will be steel powder coated posts.

The honey ants will be a lightweight aluminium clad frame, with a yellow abdomen made from translucent polycarbonate, which would be illuminated at night. This will display their honey filled bodies

The water would be drawn from the wetland basin to underground tanks and recycled. It would be used over the site as a water feature and contribute to the watering of the vegetation.

### 5) Safety

The scale of the installation allows motorists to appreciate the art without being distracted for long periods of time. It can be viewed as a whole but progressively as a car moves past it.

The honey ants will illuminate a soft yellow light, similar to the soft orange of the street lamps. This will light the site at night.

### 6) Appropriateness

The design acknowledges the traditional owners, using their artwork as inspiration for the design. Through the use of colour, sculpture and landscaping the design will provoke thought and discussion. This will promote Transurban's image as patrons of noteworthy art.

### 7) Anti vandalism + Public safety

The installation reduces the risk of vandalism with minimal large surfaces. The site will also be lit by the honey ants allowing good surveillance.

### 8) Use of the site

The concept encompasses the whole site with landscaping, enhancing with sculptural elements. The design complements the Landcare objectives, by regenerating the site through vegetation and water. Through the use of colours, the installation will be seen through the vegetation. The installation will sit below the high canopy trees proposed for the site. The coloured totem columns and vegetation can conform to the mounds proposed by Landcare.

### 9) Robust and durable

The design installation will be made of aluminium and polycarbonate, which will be able to withstand all the elements that Sydney has to offer.

### 10) Public Access

The installation is intended to be interactive from within the car, there is no need for site access.

## Aboriginal Art Piece



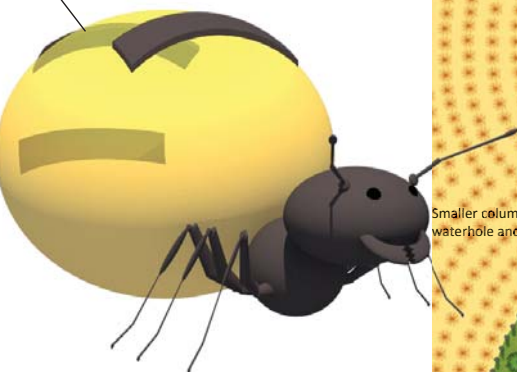
Symbol	Meaning
	Honey Ant
	Campsite, Water hole, Stone, Well, Hole, Fruit
	Boomerang
	Water hole & Running Water



Site Plan 1:2000

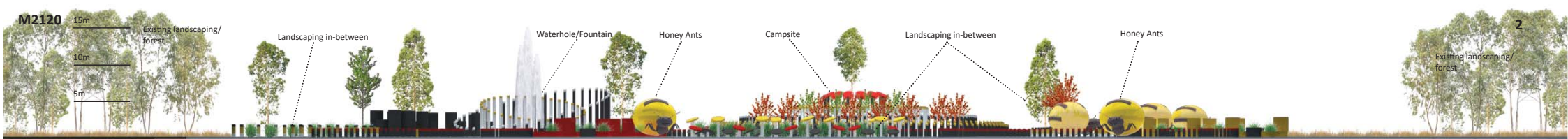
## The Honey Ant Sculpture

Translucent Abdomen Illuminates at night



Plan 1:500





Elevation 1:500



View from the M2 City Bound



View from the M2 Outbound



View of whole site