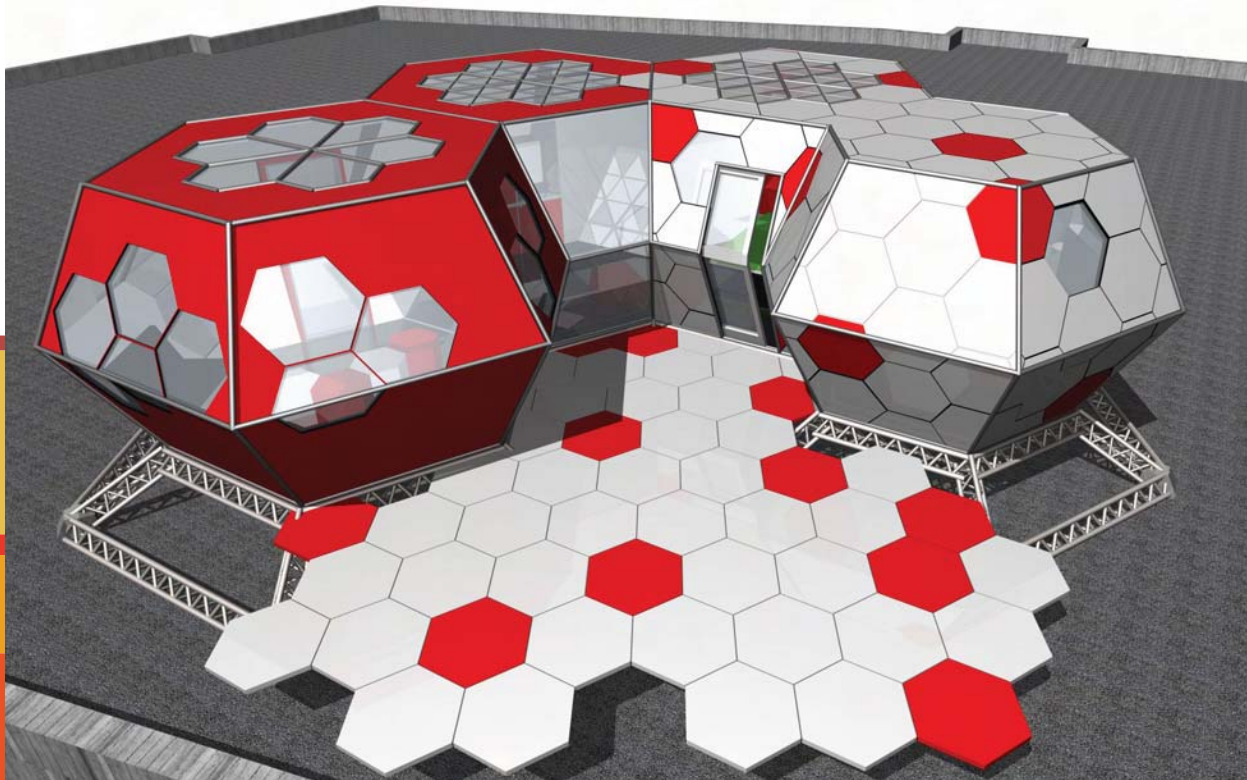


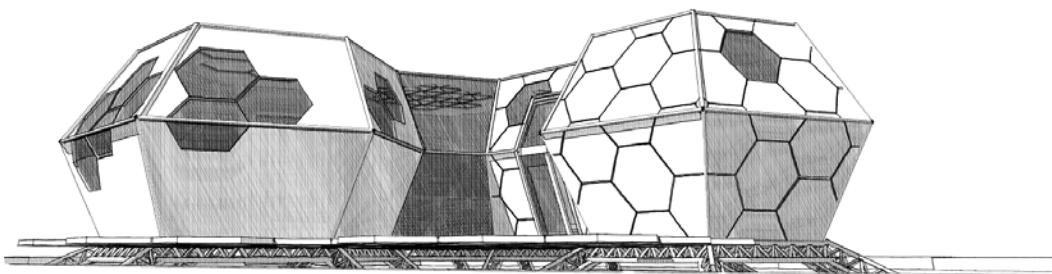


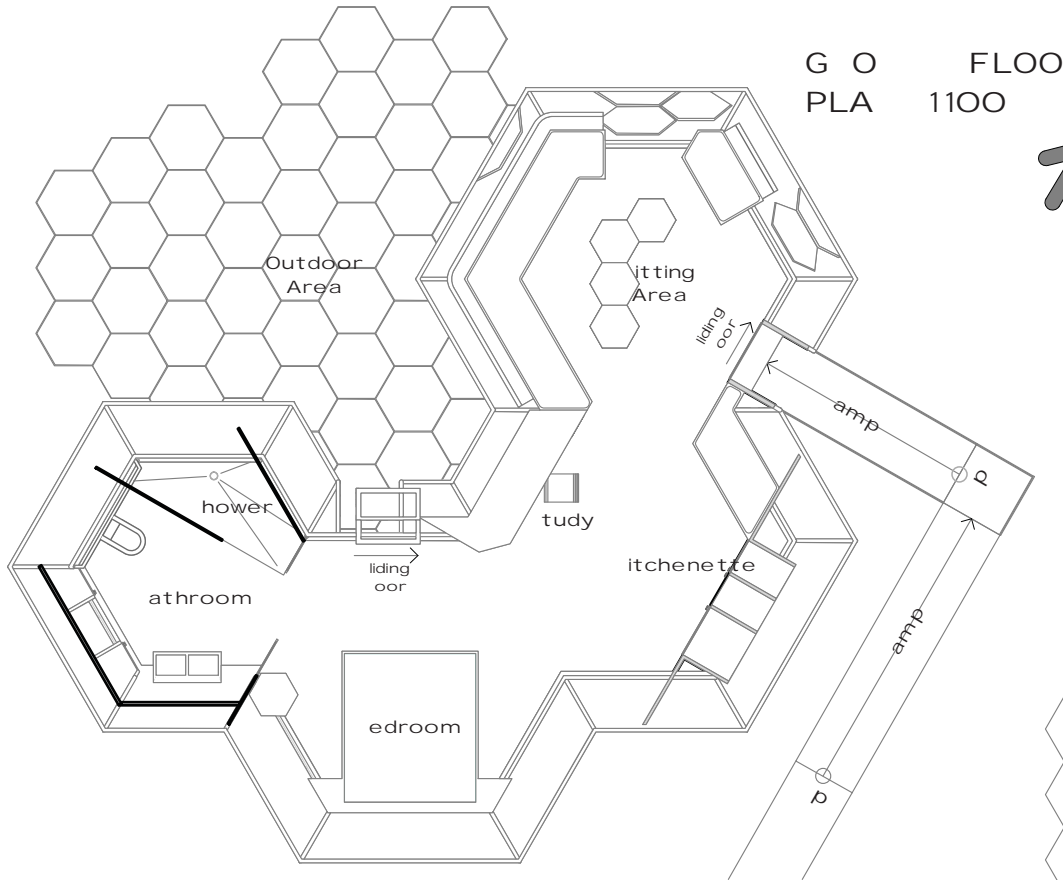
THE EAGLE HAS LANDED...



London. A city that will have the eyes of the world focused on it in 2012 for one of the oldest events in world sport, the Olympic Games. Athletes and supporters from around will descend on London in their tens of thousands. For many, this will be the first time they have been to London - a city everyone knows by name and reputation. London will be at its best. The Olympics will be the start of a new era in London's long and illustrious history. Many new sights will have been added to the city as well as the rejuvenation of much of the city. The Olympic year heralds a great time to discover the real London. The Eagle will be the launch pad for this exploration of London, from which anyone can take that one small step into the myriad of sights and sounds of one the greatest cities of the planet.

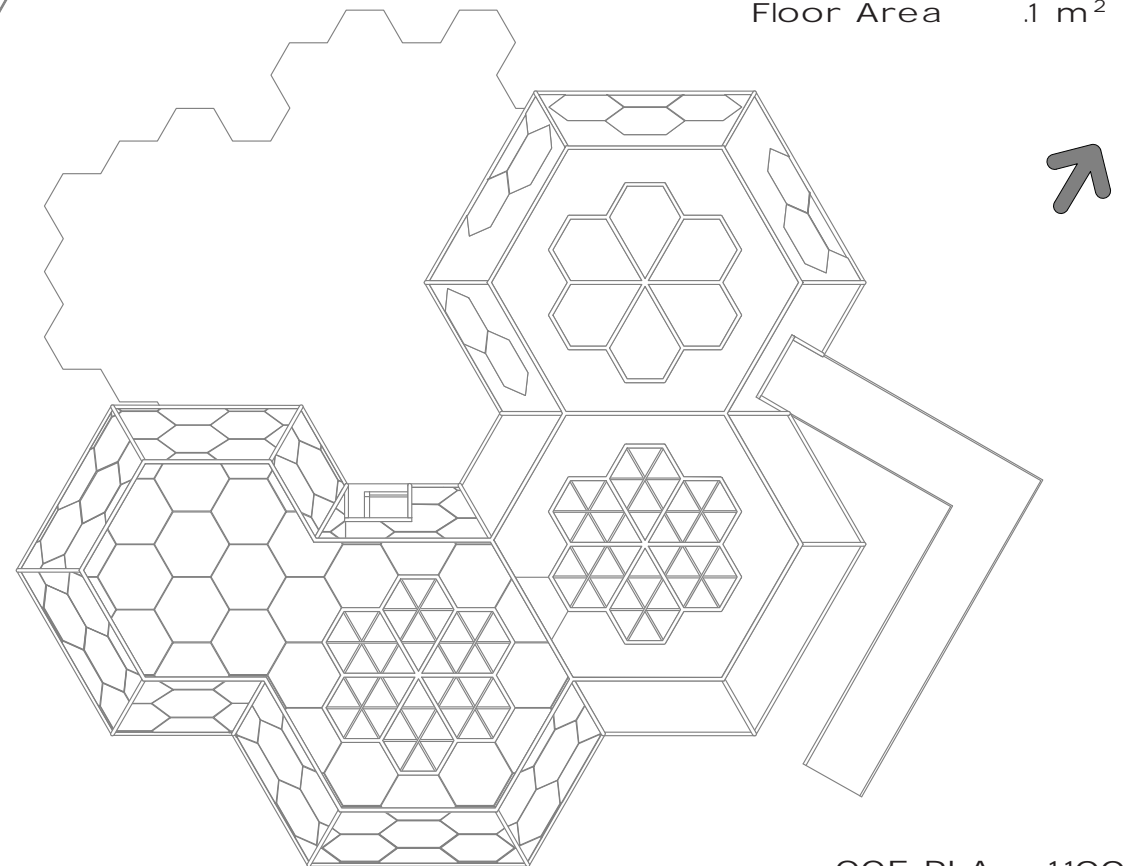
The Eagle provides the opportunity to journey through the vibrant London culture by placing the visitor at the centre of this world. And at the end of a long day, they will be able to relax and enjoy the sunset and sights above the hustle and bustle of daily life.



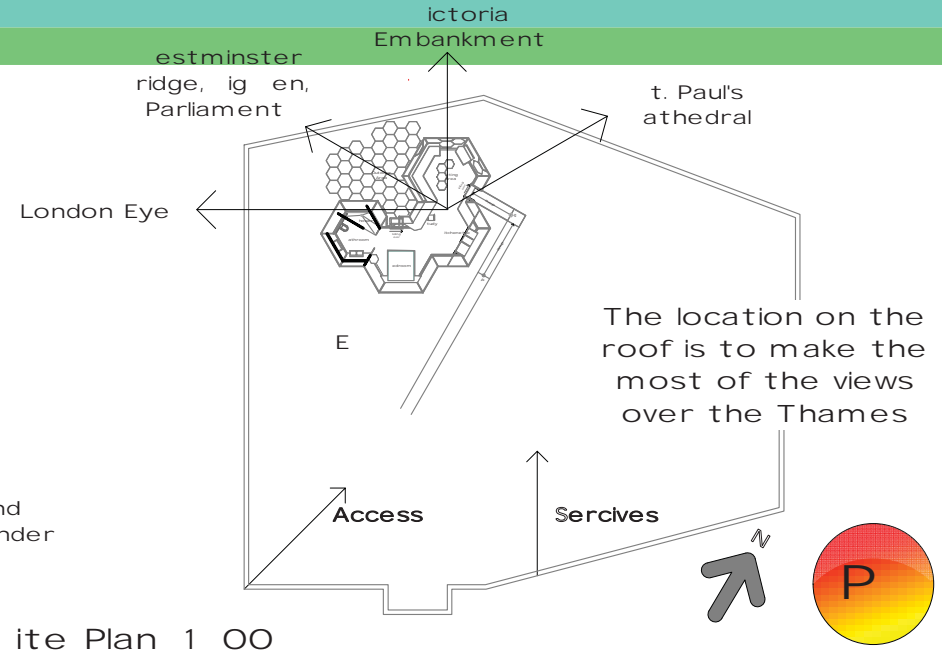
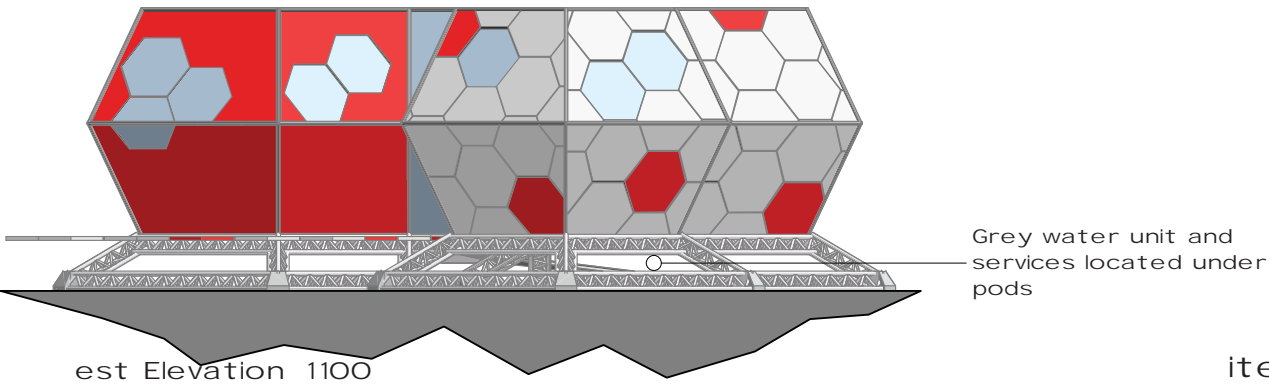
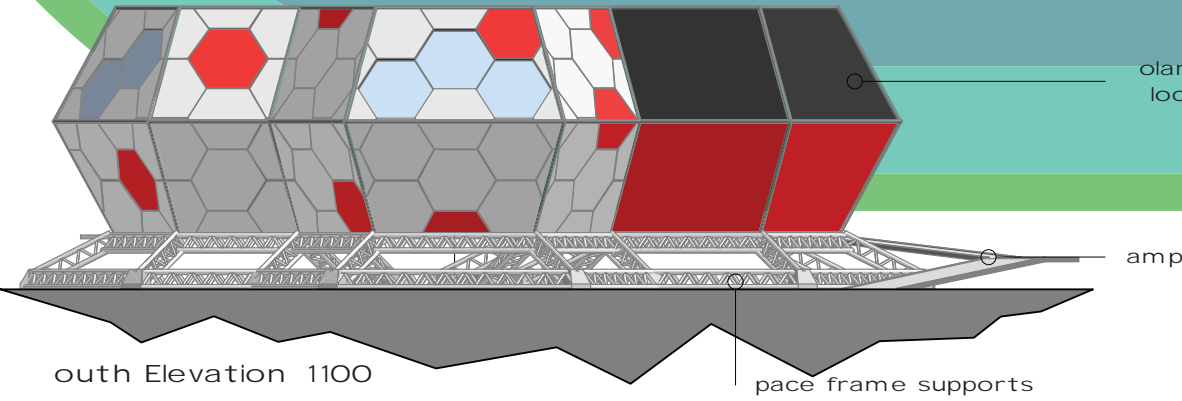
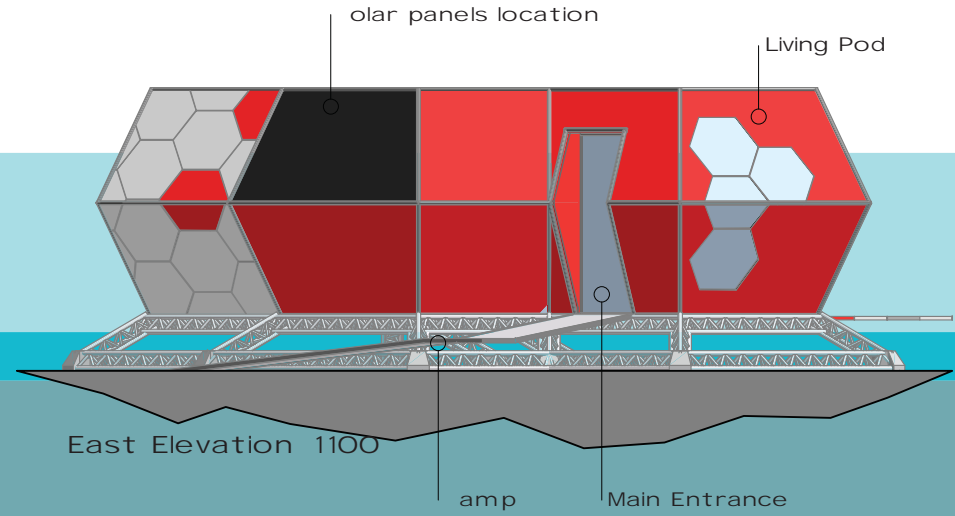
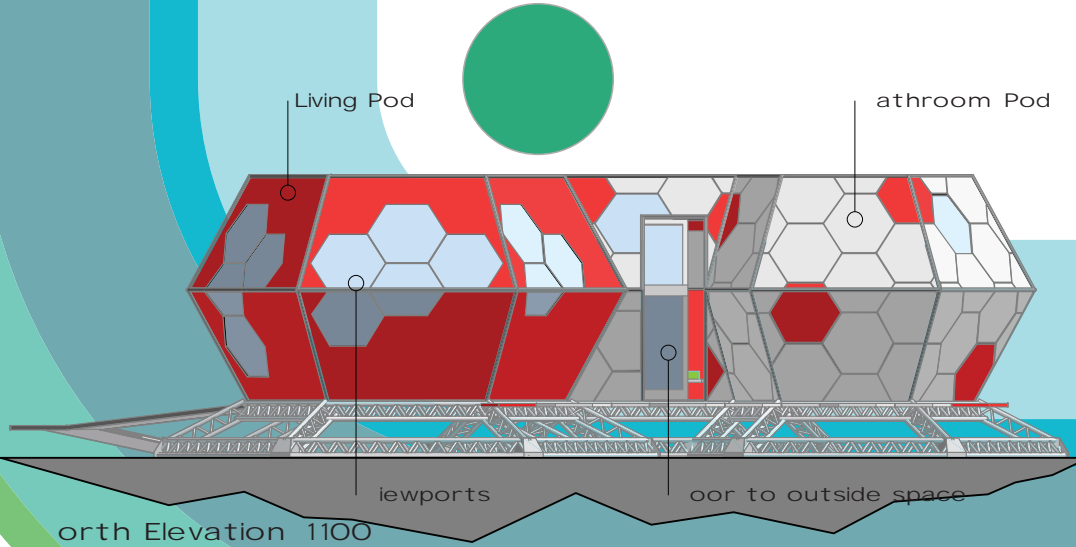


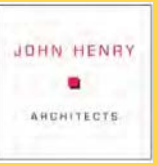
London has stood for so long as the symbol of British culture - if you talk to many people around the world, they singularly associate 'British' with London. This is due to London being the centre of 'cool' during the 60's and 70's - the Beatles, Mini Cooper, James Bond, fashion, design and revolution put London on the map and it has remained there ever since. Now is the time to show the world that London has not lost any of this but has evolved even further.

Floor Area 1100 m²



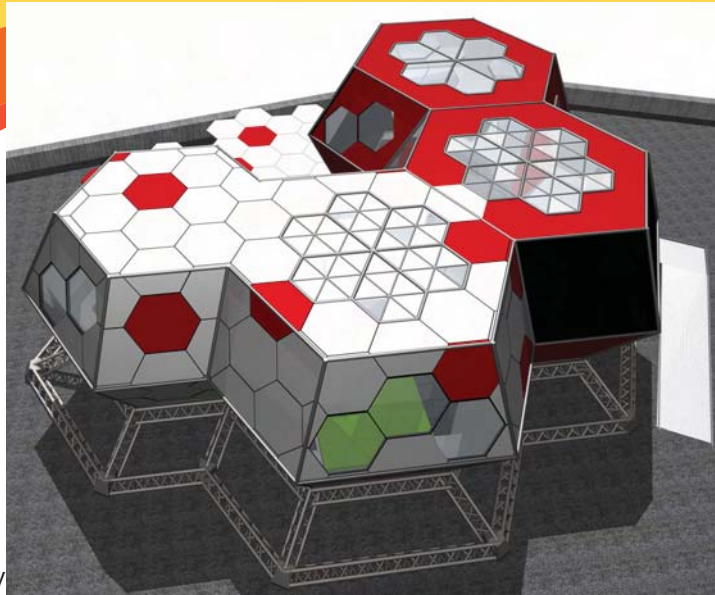
Taking inspiration from the concept of 'discovery', 'landing' and 'human', we looked for an event that symbolised 'landing in the name of discovery' - the moon landings of 1969. One event of discovery that brought the world together and, arguably one of the greatest moments in human history. The Olympics brings the world together in the oldest sporting challenge and will give everyone the opportunity to re-discover a new, modern, rejuvenated London.





Internal view of Living Pod

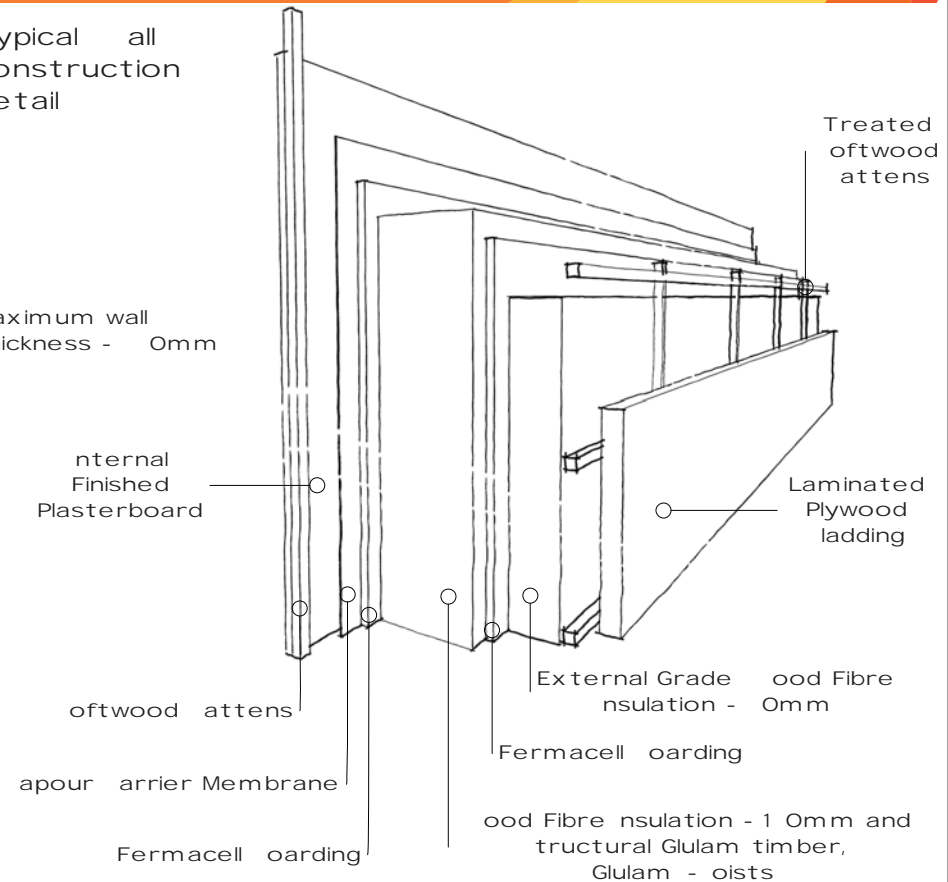
The Eagle is a prefabricated design, ensuring mass manufacture without too much waste. The structure can be easily disassembled and moved to another location. It is also designed for sustained use throughout the year. The construction allows for maximum heating efficiency through the use of an Air source heat Pump with heat recovery system. This allows for use in the harshest of conditions while sustaining a minimal carbon footprint.



External view

Typical wall construction detail

Maximum wall thickness - 100mm



A Room for London Competition 2010

T A P O T A T O

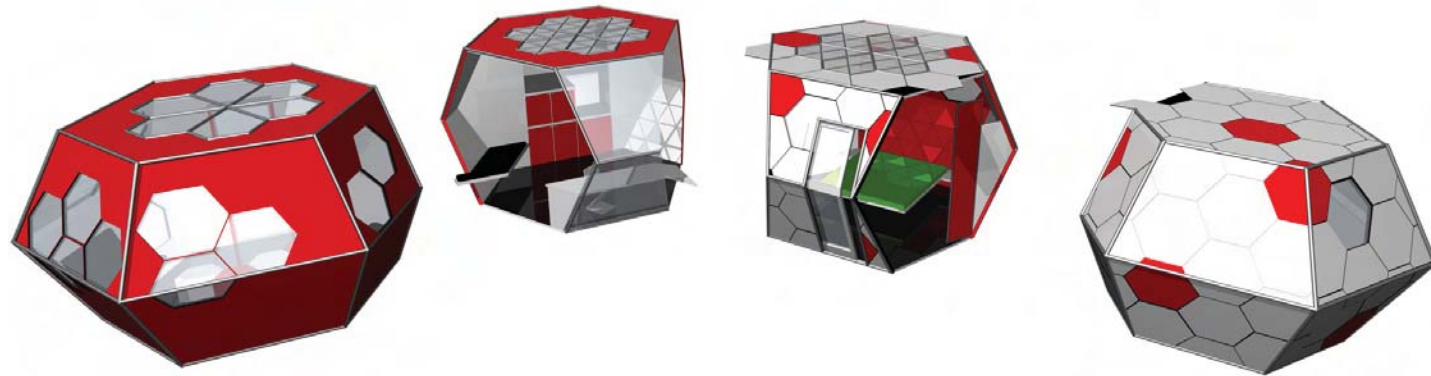


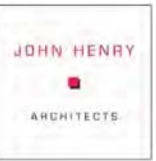
Image showing how the Eagle splits up into its separate parts

The Eagle is designed to break down into separate pods for ease of transportation. The pods are transported to the site, lifted into position and bolted sealed together to form the complete suite. The whole room is placed on top of a space frame structure that elevates The Eagle for better views and spreads the weight of the room evenly across the site area. The aesthetic created is as if the room has landed on the barren roof top, in line with the initial concept. The lack of landscaping on the entrance side of the Eagle also adds to this feeling. The outdoor areas are customisable and are supported by an extension to the rooms structural frame. This area and the footpath to the room will have a railing system in place in conjunction with building regulations, though this can easily be removed if the room was located on another site. The Eagle would require a minimum of transporters to move the pods and structural base.



JOHN HENRY ARCHITECTS

131 Thompson Crescent,
Research, Victoria,
Australia 3095



in association with HLM Architects, London

E O E E T A L

Grey water harvesting system will be installed under the Eagle. Photovoltaic cells installed to boost hot water and or electricity.

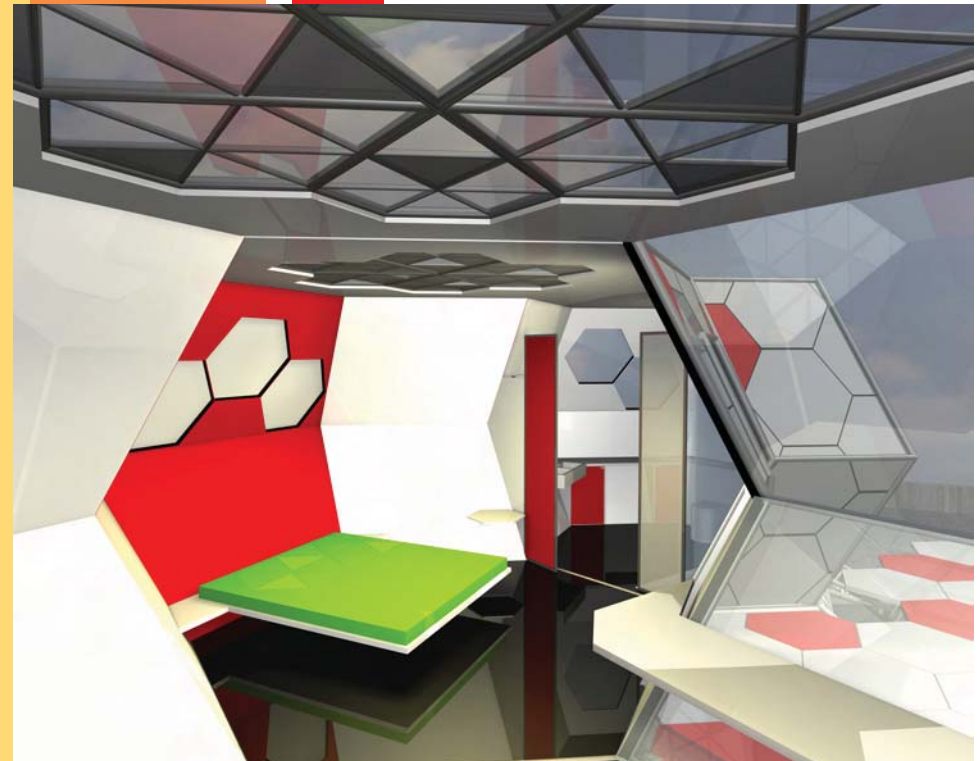
Main heating provided by Air source heat Pump system. Cooling by natural ventilation through roof lights.

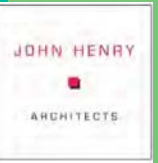
Heat recovery system.

Water efficient fixtures and fittings.

Sustainable recyclable construction materials.

Internal view





Photomontage of the Eagle on top of the Queen Elizabeth Hall, London.

